

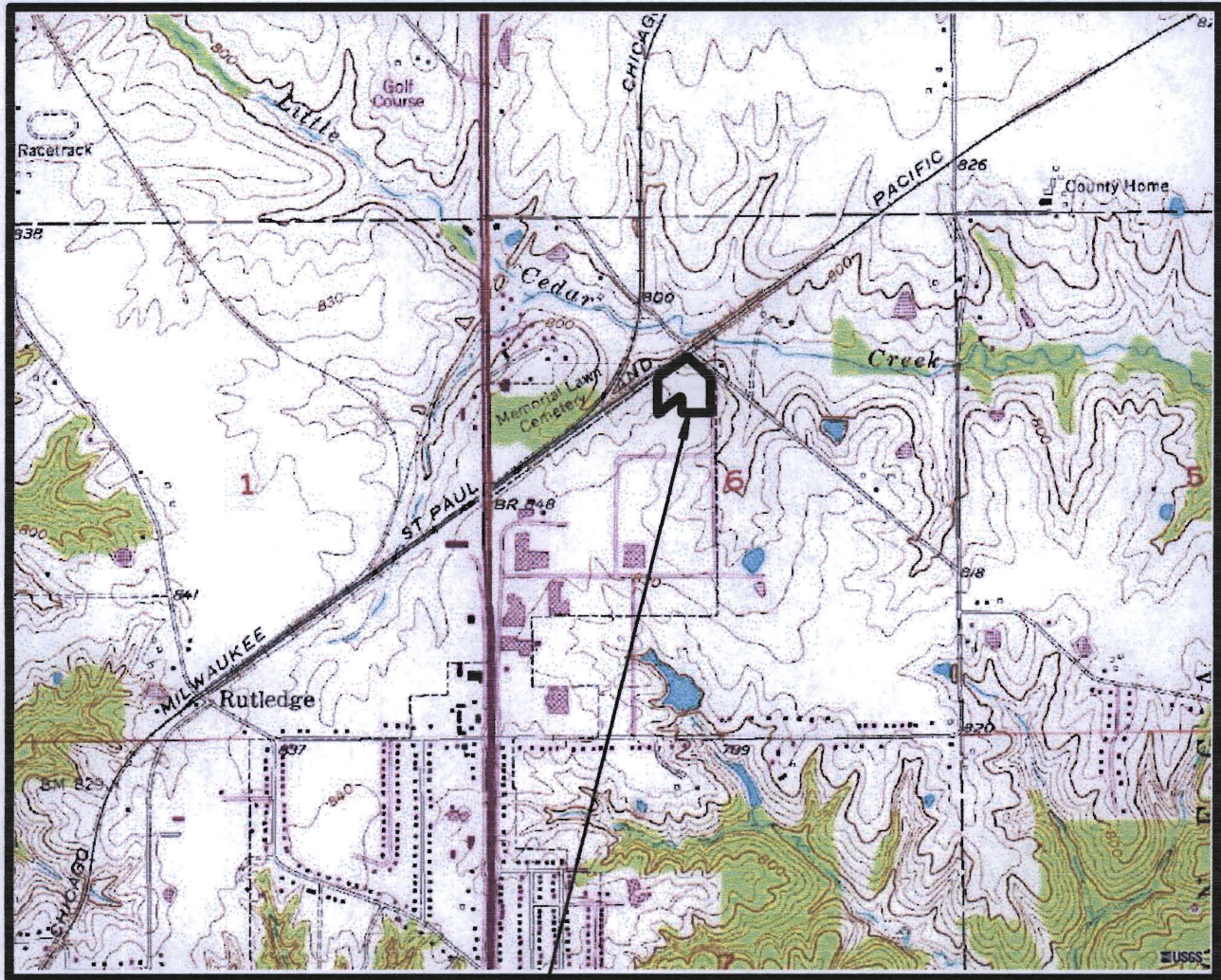
**APPENDIX 1**

**FIGURES**

D0670

Figure 1 – Site Location Plan

D0671



Site Location

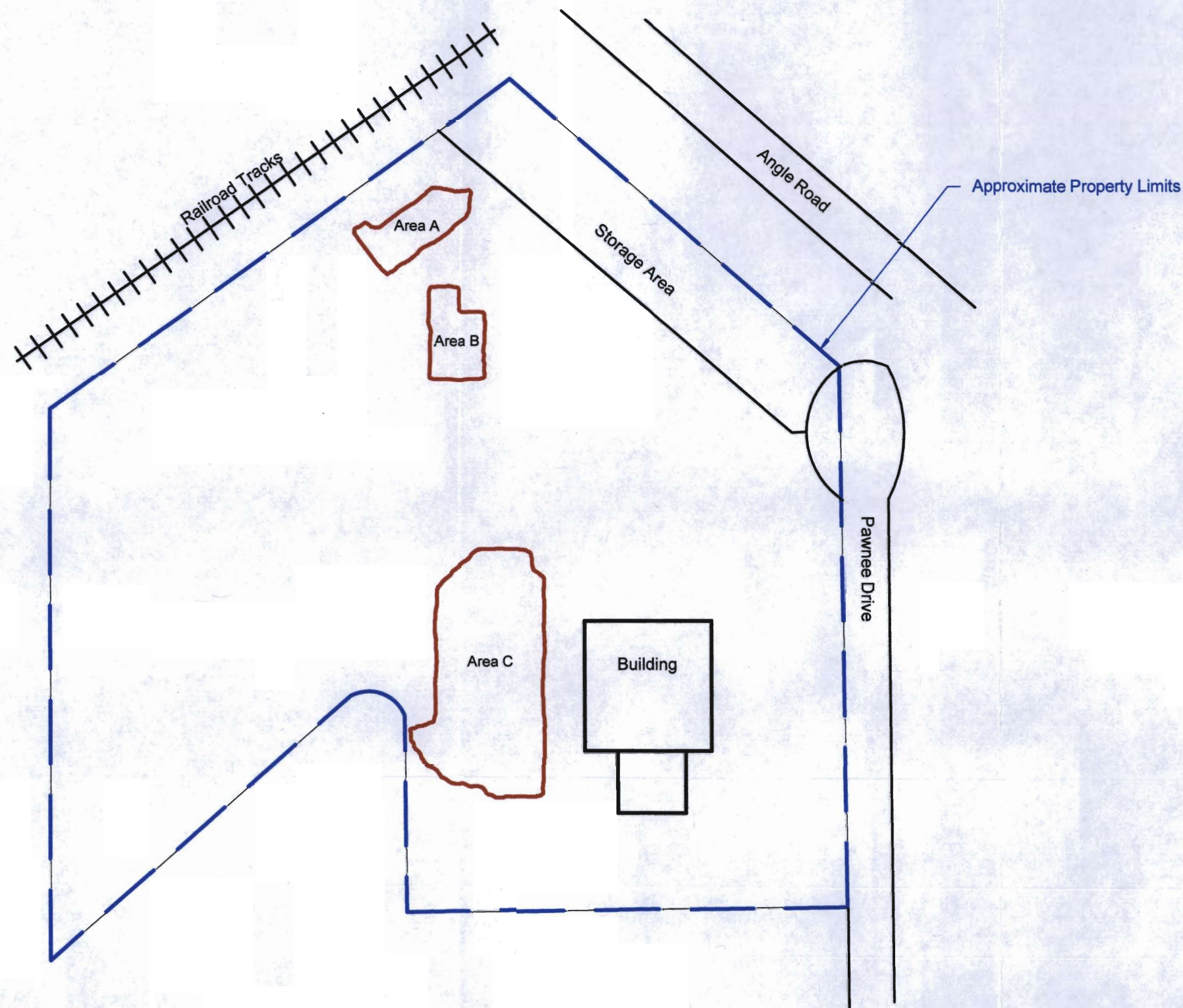
D0672

Note: Locations and Dimensions Are Approximate  
Not a Legal Survey  
For Environmental Management Purposes Only

Title: <b>Site Location Plan</b>	<b>21<sup>st</sup> Century Resources, Inc.</b> 7486 Woodbriar Lane, West Bloomfield, Michigan 48322	Project No.: 29-G114	Figure: <b>1</b>
Project: <b>Southern Iowa Mechanical</b> 3043 Pawnee Drive, Ottumwa, Iowa	Scale: 0 ft. 1,000 ft. 2,000 ft. 	Drawn By: JPS Checked By: GAG	Date: 20 Aug 2009

Figure 2 – Site Plan

D0673



This Site Plan is based on a site sketch prepared by others and provided to 21st Century Resources, inc by Stinson Morrison Hecker, LLP Independent verification not conducted

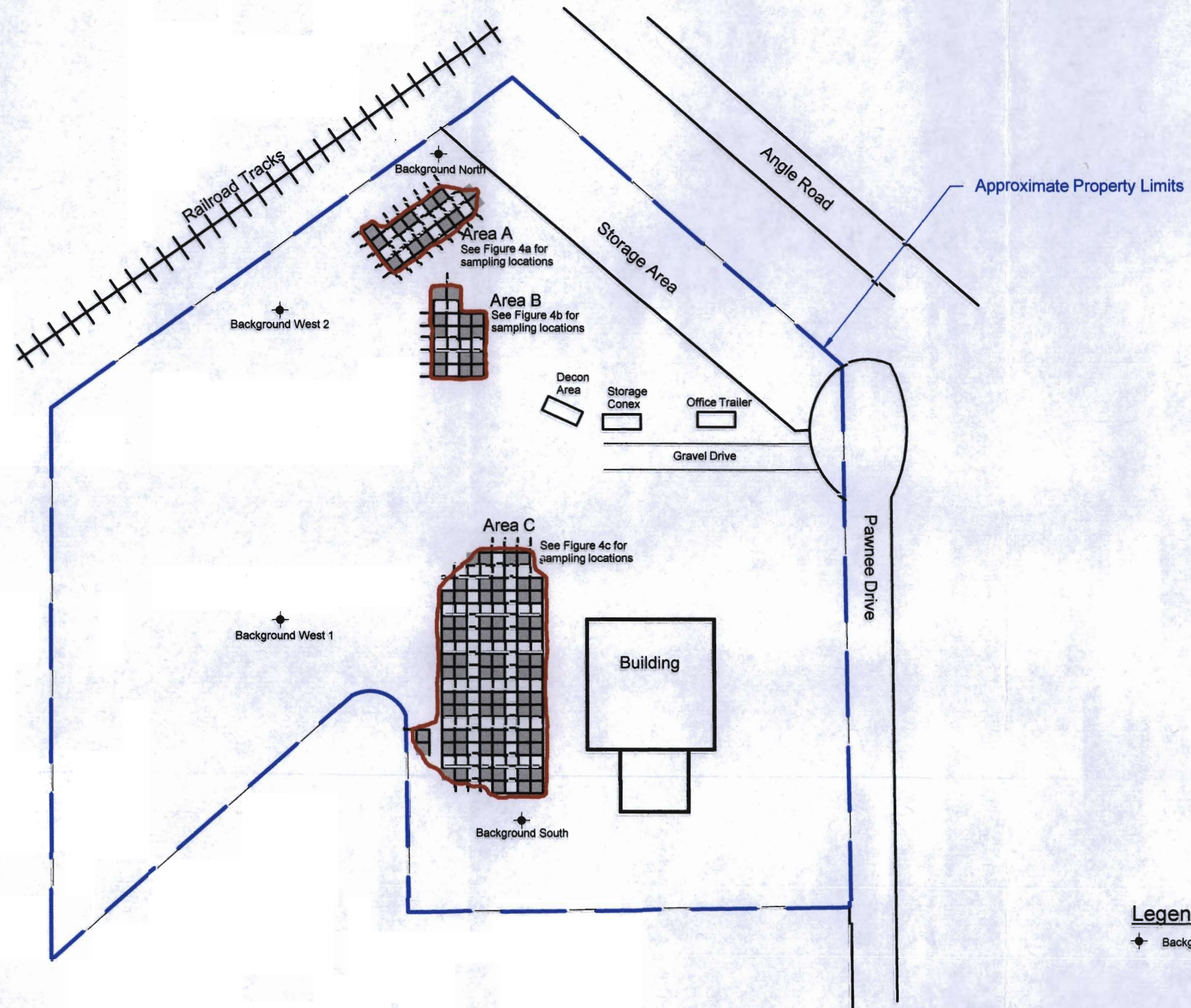
Note: Locations and Dimensions Are Approximate  
Not a Legal Survey  
For Environmental Management Purposes Only

Title: <b>Site Plan</b>	<b>21<sup>st</sup> Century Resources, Inc.</b> 7486 Woodbriar Lane, West Bloomfield, Michigan 48322	Project No.: 29-G114	Figure: <b>2</b>
Project: Southern Iowa Mechanical 3043 Pawnee Drive, Ottumwa, Iowa	Scale: 0 ft. 50 ft. 100 ft. 	Drawn By: JPS Checked By: GAG	Date: 20 Aug 2009

D0674

**Figure 3 – Soil Sampling Plan**

D0675



**Legend:**

◆ Background Soil Sample Location

This Site Plan is based on a site sketch prepared by others and provided to 21st Century Resources, Inc by Stinson Morrison Hecker, LLP Independent verification not conducted

Note: Locations and Dimensions Are Approximate  
Not a Legal Survey  
For Environmental Management Purposes Only

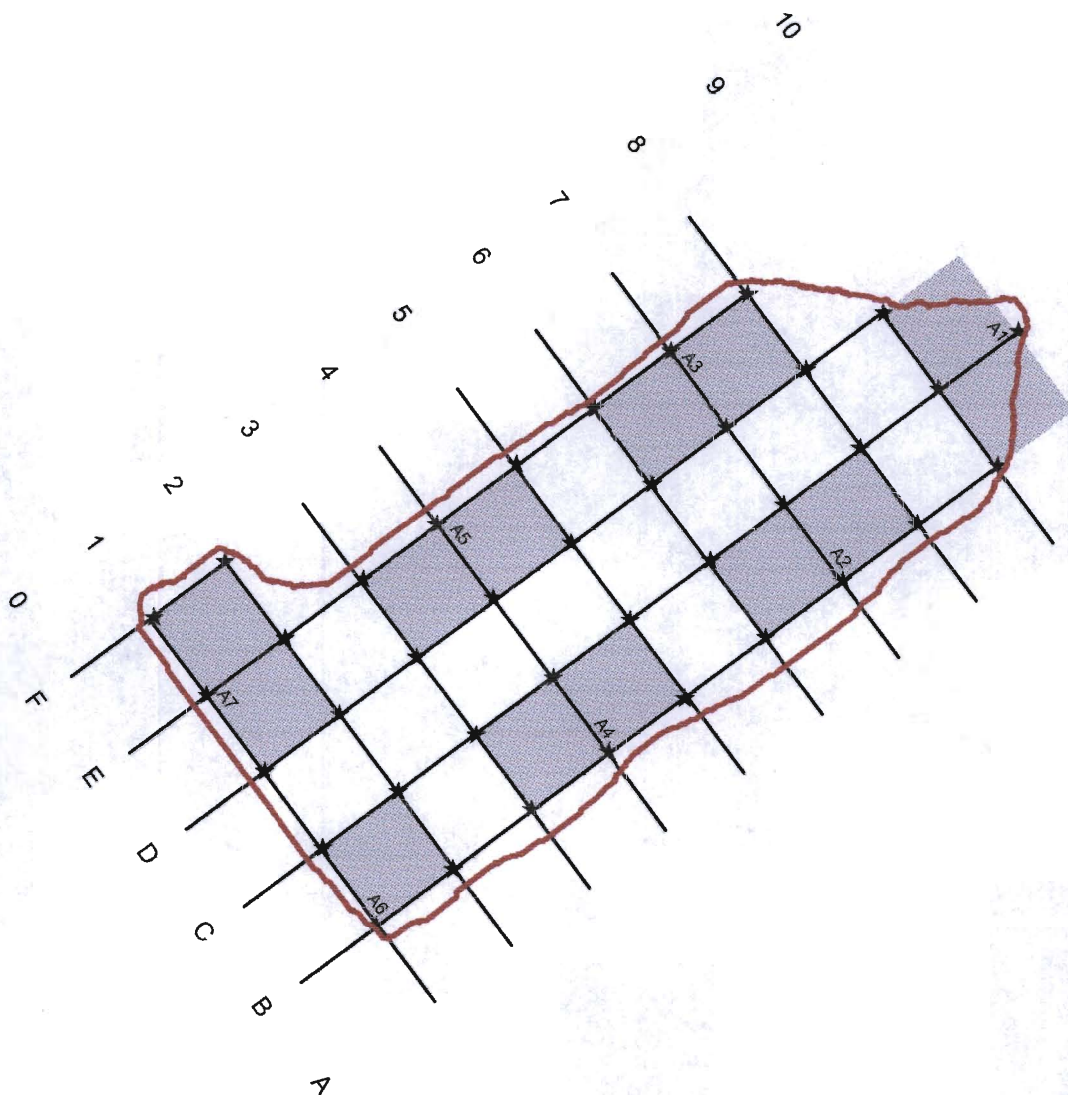
Title: <b>Soil Sampling Plan</b>	<b>21<sup>st</sup> Century Resources, Inc.</b> <small>7486 Woodbriar Lane, West Bloomfield, Michigan 48322</small>	Project No.: 29-G114	Figure: <b>3</b>
Project: <b>Southern Iowa Mechanical</b> <small>3043 Pawnee Drive, Ottumwa, Iowa</small>	Scale: 0 ft. 50 ft. 100 ft.	Drawn By: JPS Checked By: GAG	Date: 27 Aug 2009

D0676

Figure 4a – Area A Sample Grid

D0677





**Legend:**

 A1 Composite Sample and ID

★ Grab Sample at Grid Point

Samples were collected on August 12, 2009

Composite Soil Samples Were Non-Detect for PCBs

Note: Locations and Dimensions Are Approximate  
Not a Legal Survey  
For Environmental Management Purposes Only

D0678


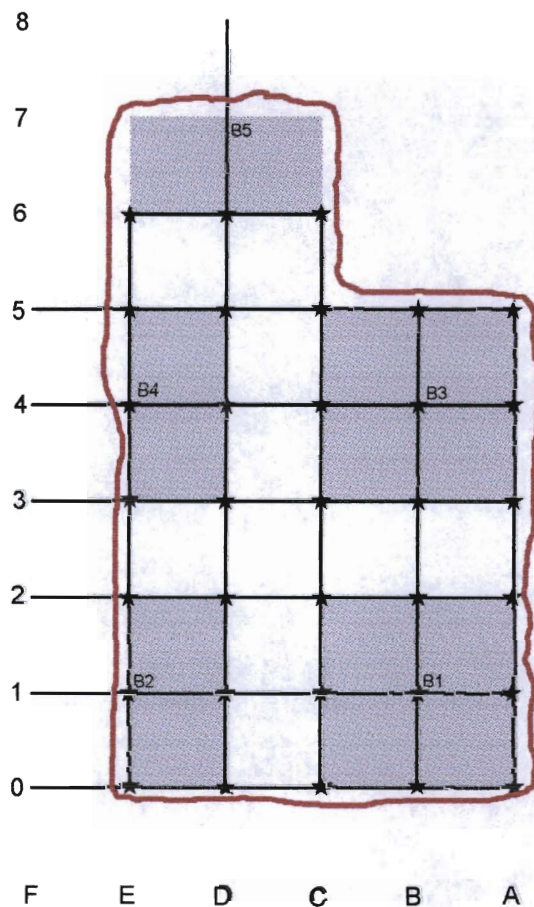
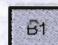
Title: <b>Area A Sample Grid</b>	<b>21<sup>st</sup> Century Resources, Inc.</b> 7486 Woodbriar Lane, West Bloomfield, Michigan 48322	Project No.: 29-G114	Figure: <b>4a</b>
Project: <b>Southern Iowa Mechanical</b> 3043 Pawnee Drive, Ottumwa, Iowa	Scale: 0 ft. 10 ft. 20 ft. 	Drawn By: JPS Checked By: GAG	Date: 24 Aug 2009

Figure 4b – Area B Sample Grid

D0679



**Legend:**

 Composite Sample and ID

★ Grab Sample at Grid Point

Samples were collected on August 12, 2009

Composite Soil Samples Were Non-Detect for PCBs

Note: Locations and Dimensions Are Approximate  
Not a Legal Survey  
For Environmental Management Purposes Only

D0680

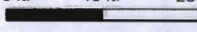
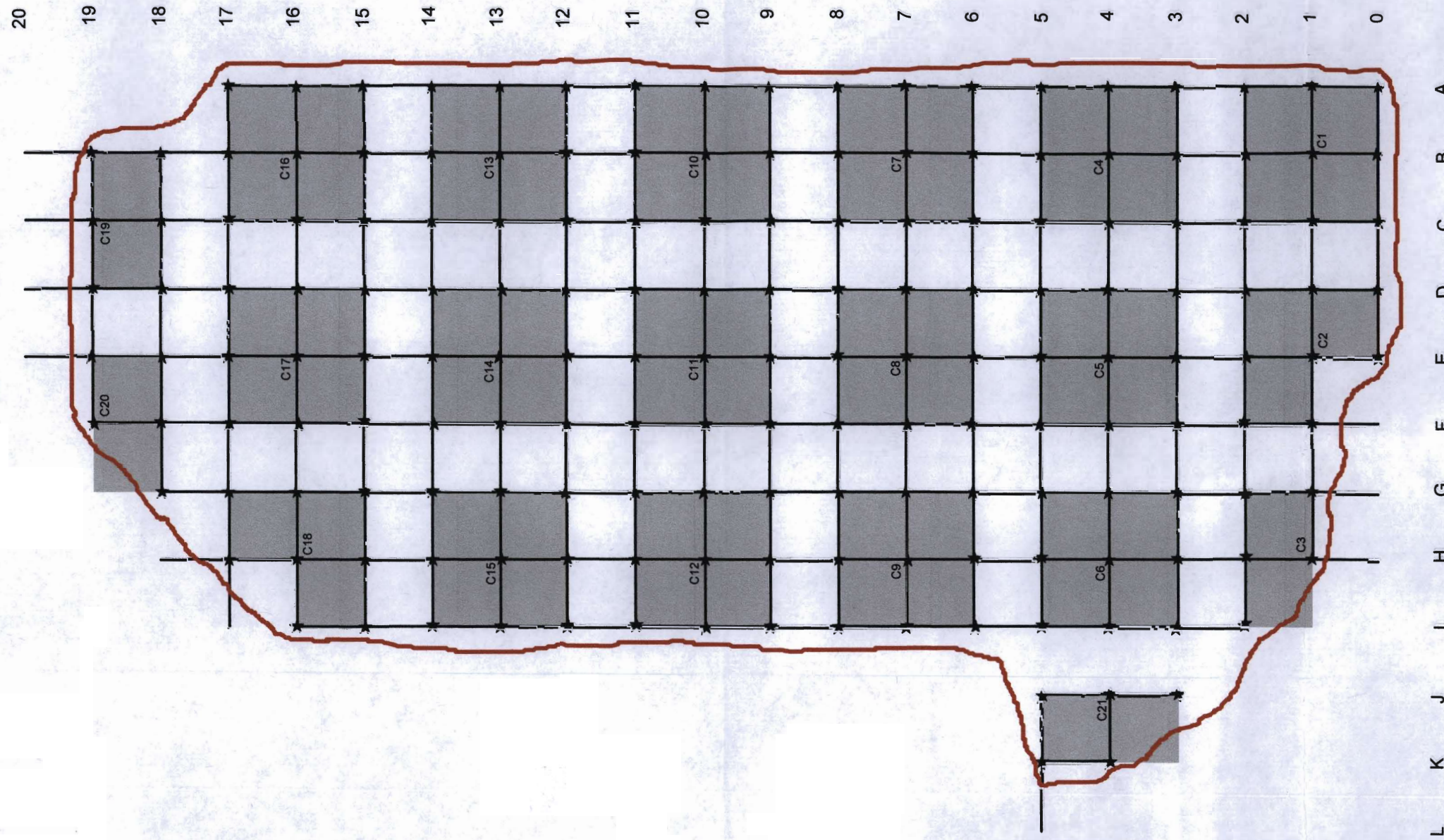
Title: <b>Area B Sample Grid</b>	<b>21<sup>st</sup> Century Resources, Inc.</b> 7488 Woodbriar Lane, West Bloomfield, Michigan 48322	Project No.: 29-G114	Figure: <b>4b</b>
Project: <b>Southern Iowa Mechanical</b> 3043 Pawnee Drive, Ottumwa, Iowa	Scale: 0 ft. 10 ft. 20 ft. 	Drawn By: JPS Checked By: GAG	Date: 24 Aug 2009

Figure 4c – Area C Sample Grid

D0681



**Legend:**

C1 Composite Sample and ID

★ Grab Sample at Grid Point

Samples were collected on August 12, 2009

Composite Soil Samples Were Non-Detect for PCBs

Note: Locations and Dimensions Are Approximate  
Not a Legal Survey  
For Environmental Management Purposes Only

Title: <b>Area C Sample Grid</b>	<b>21<sup>st</sup> Century Resources, Inc.</b> <small>7486 Woodbriar Lane, West Bloomfield, Michigan 48322</small>	Project No.: 29-G114	Figure: <b>4c</b>
Project: <b>Southern Iowa Mechanical</b> <small>3043 Pawnee Drive, Ottumwa, Iowa</small>	Scale: 0 ft.    10 ft.    20 ft.	Drawn By: JPS Checked By: GAG	Date: 24 Aug 2009

D0682